

Safe-handling ideas for Doctor Blades used in



Flexo

and



Gravure

ALLISON

Systems Corporation

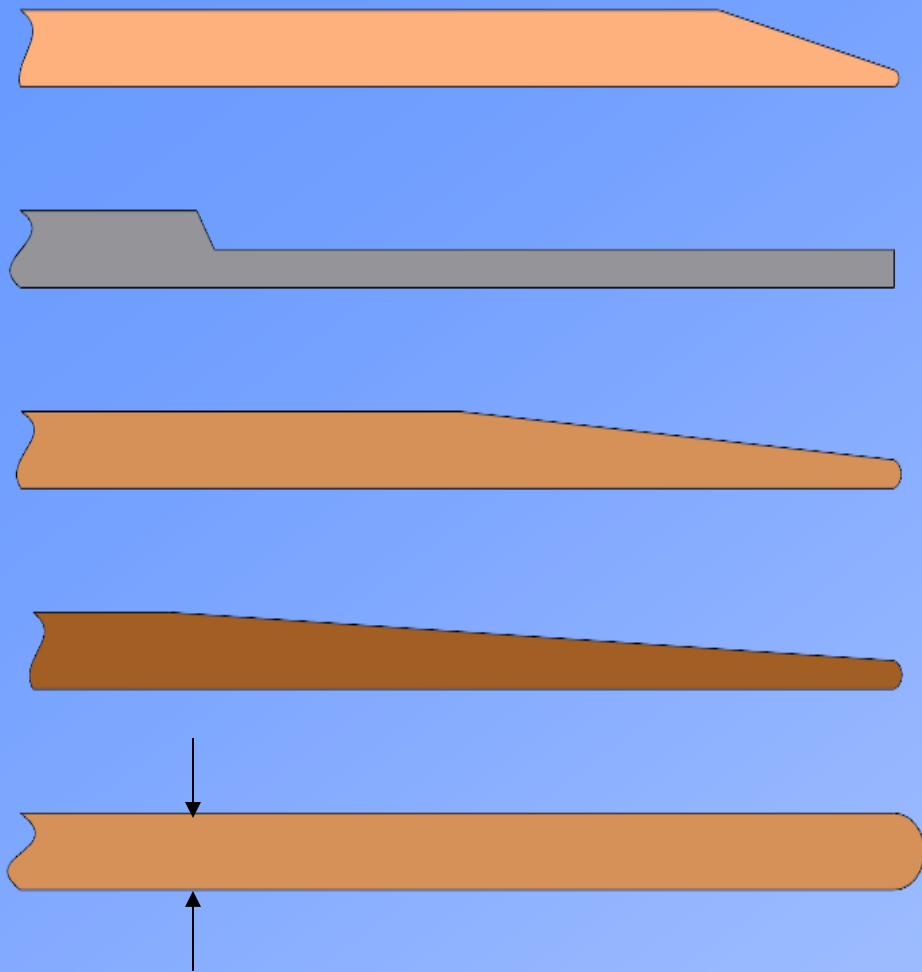
220 Adams St.

Phone: 856-461-9111

Riverside, NJ 08075

Fax: 856-461-9373

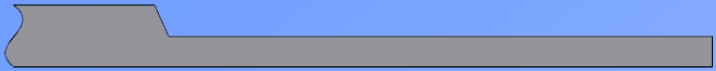
www.allisonblades.com



***The edges of
typical new,
unused metal
Flexo and
Gravure doctor
blades look
like this in
cross-section***

.004 " - .012 " total thickness

While these edges don't look very sharp, new blades must be **HANDLED WITH CARE!**



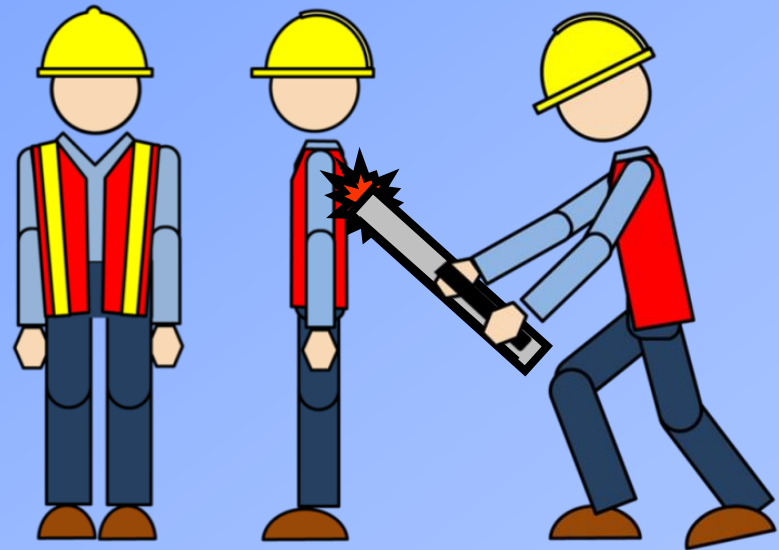
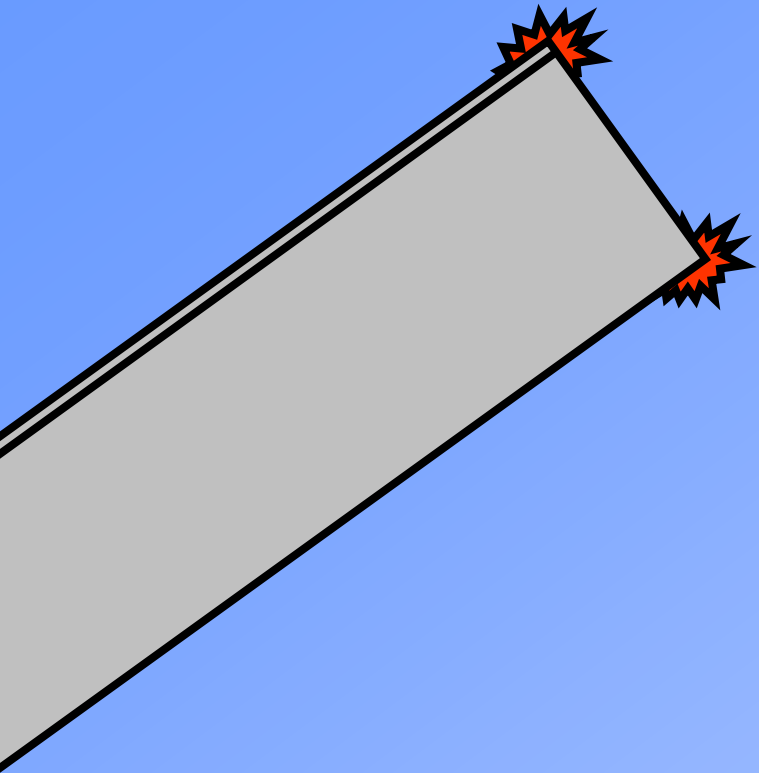
-- Because you can

*****STILL GET INJURED!*****

(And damage blades, WHICH MAY THEN PRINT SCRAP!)

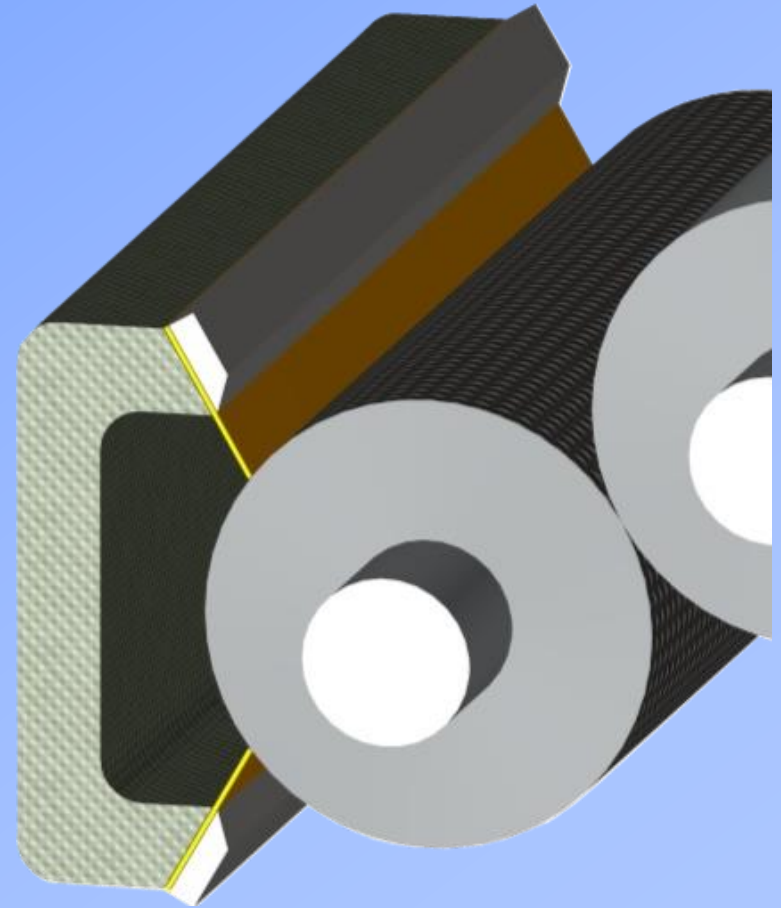
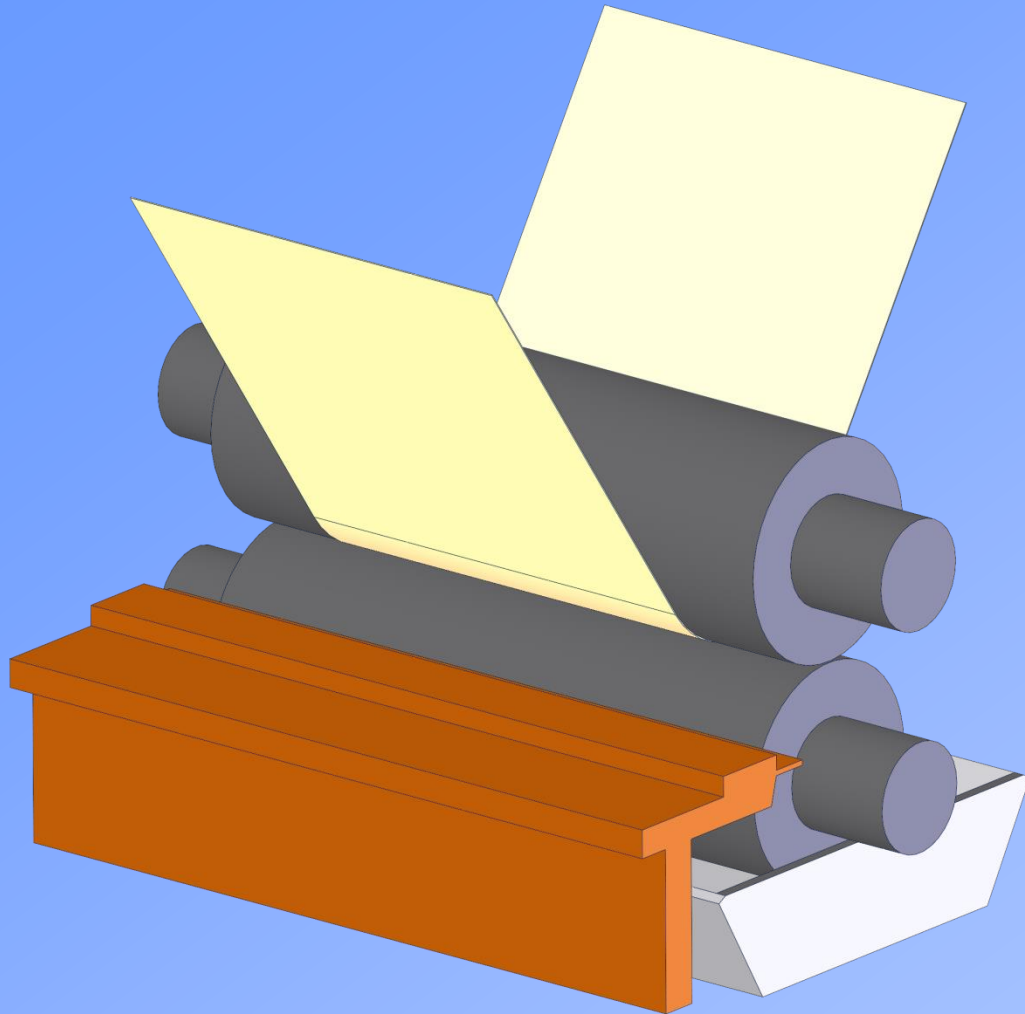
For example, even new blades have CORNERS,

... so don't carry around loose coils (or loose blades)..



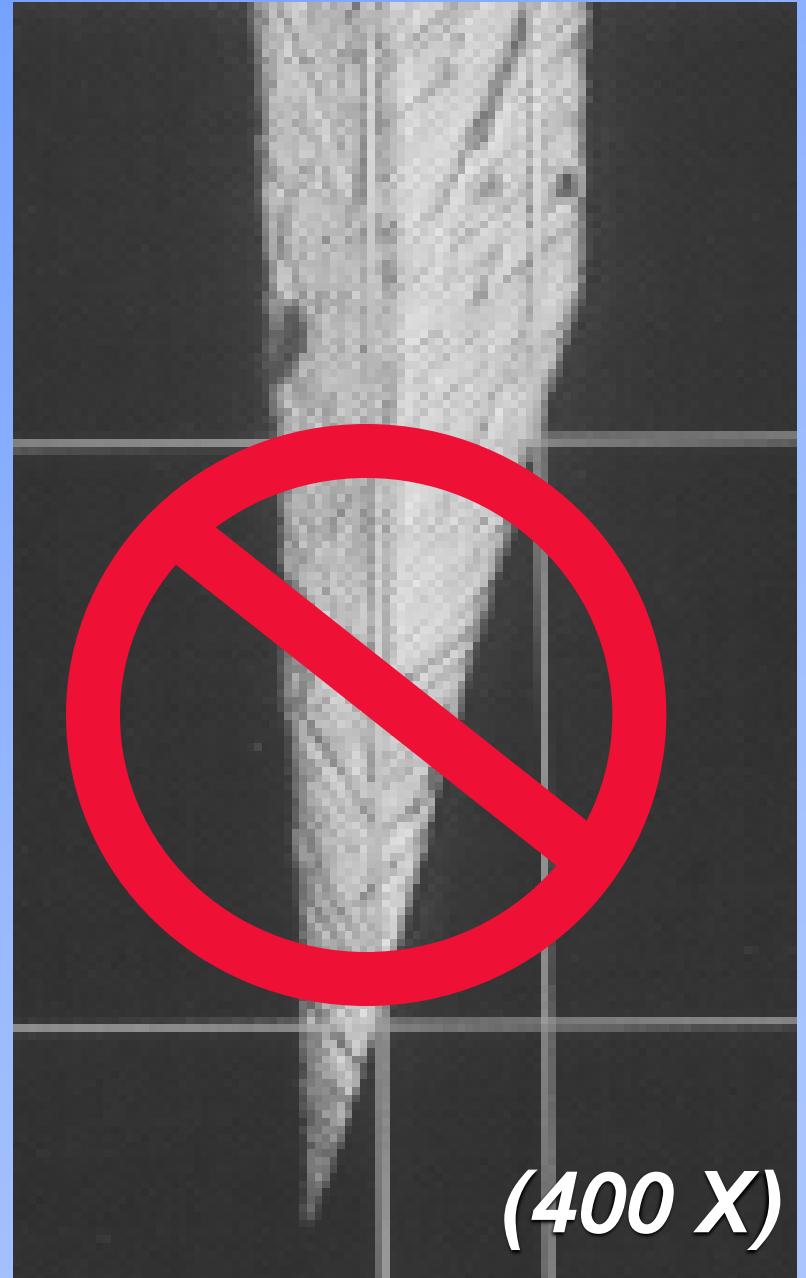
***...because blade corners can SPRING OUT
AND INJURE YOU OR A CO-WORKER!***

And as gravure and flexo doctor blades
wear against the rolls they wipe,



Blade edges get
RAZOR SHARP,
JAGGED

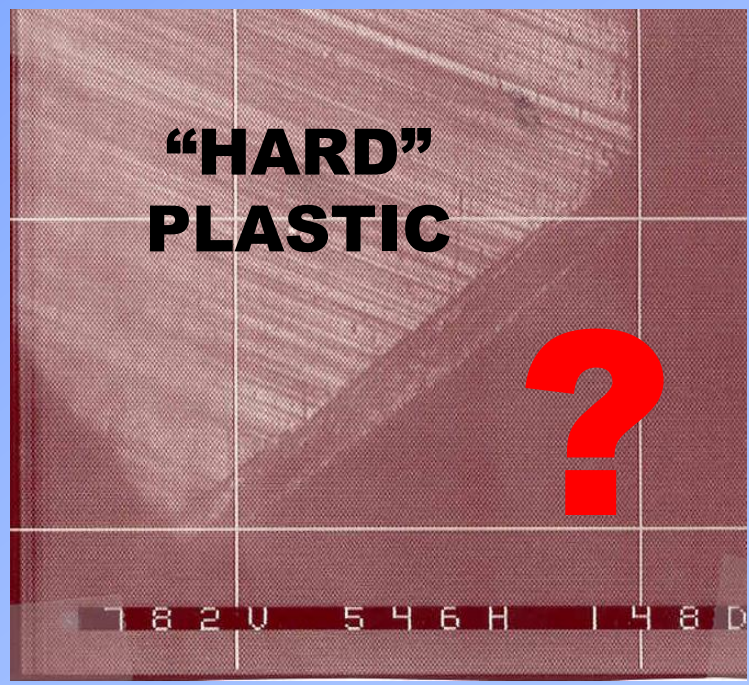
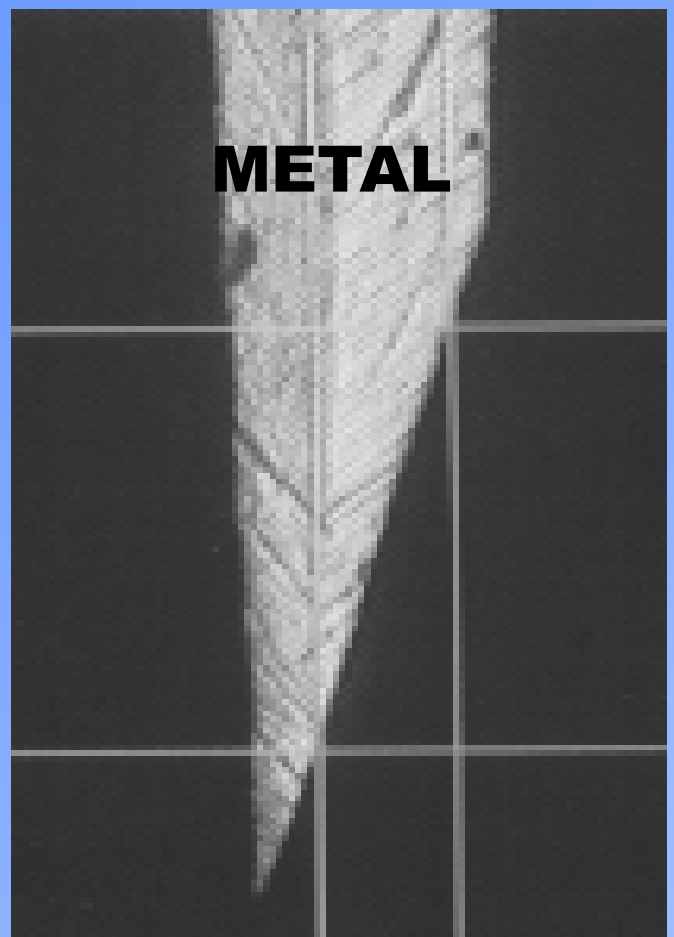
..and
DANGEROUS
TO HANDLE
OR CONTACT



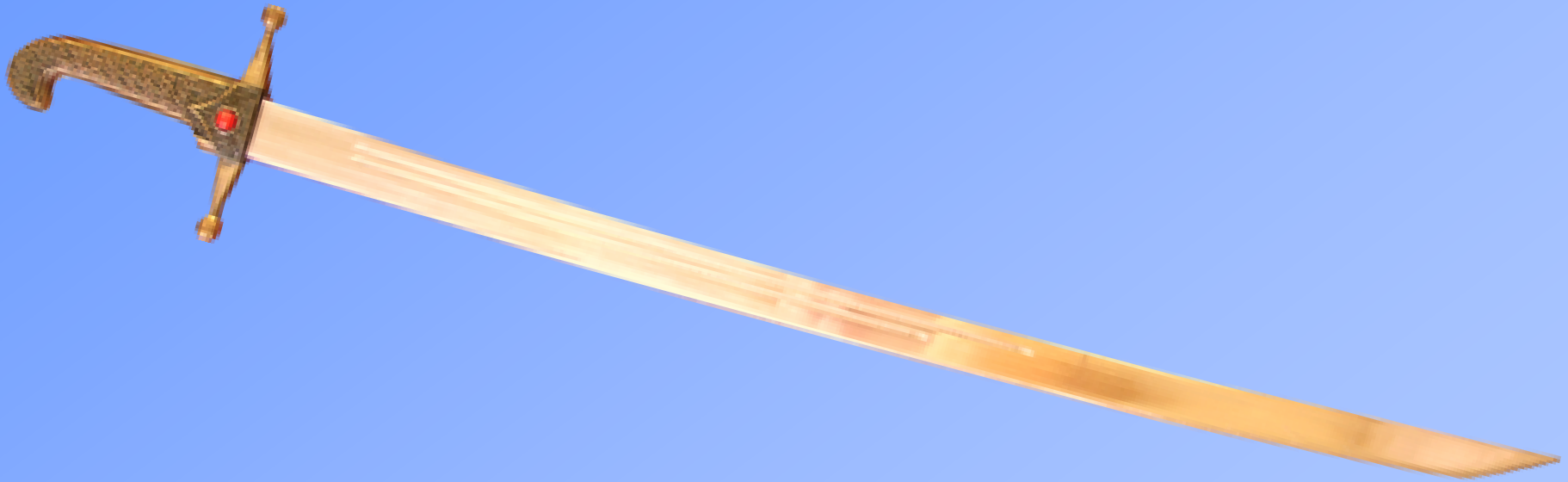
(400 X)

Are plastic doctor blades never sharp ?

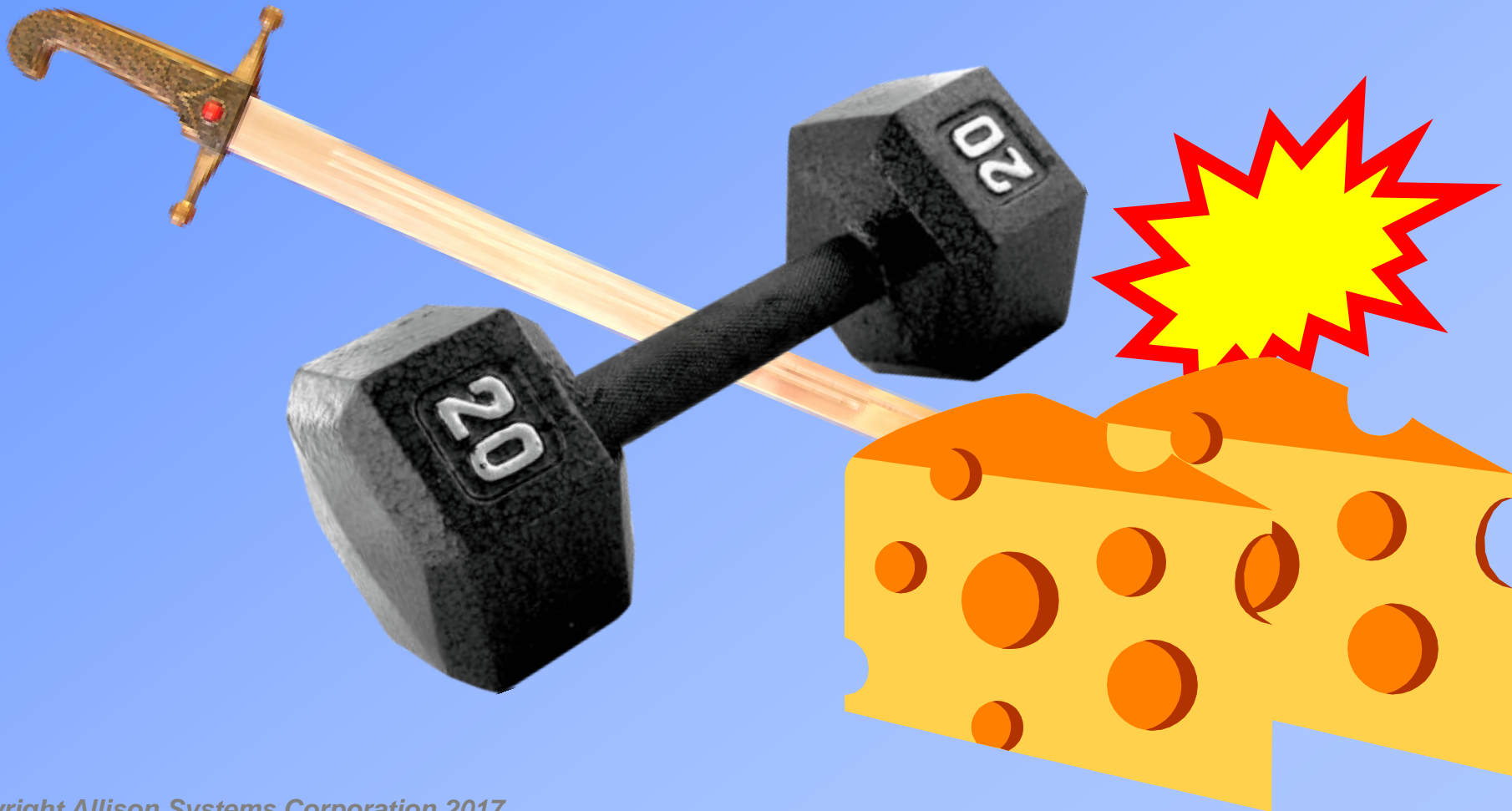
DON'T BET ON IT: Hard plastics and composites can get sharp when worn, too...



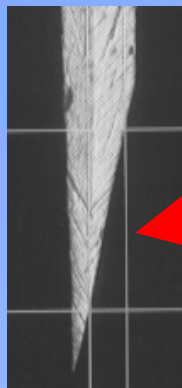
Q: What's more dangerous than a falling blade with sharp edges?



**A: A falling blade with some
weight behind it.....**



So beware of
**LOOSE
HOLDERS**
containing worn
(or new) doctor
blades



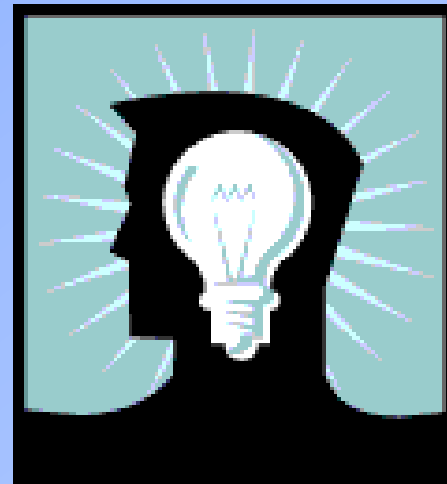
...and **Flexo chambers** that can tip, move or fall while you're working on blades



(Ps: Never put bare hands into chambers between two sharp doctor blades !)

***So how can I make
doctor blade handling
fundamentally safer?***

***HERE ARE
SOME IDEAS:***



It's strongly recommended that you keep blades in their protective packaging and install them directly from these packages where possible:



Doing work on common doctor blade assemblies with bare hands is



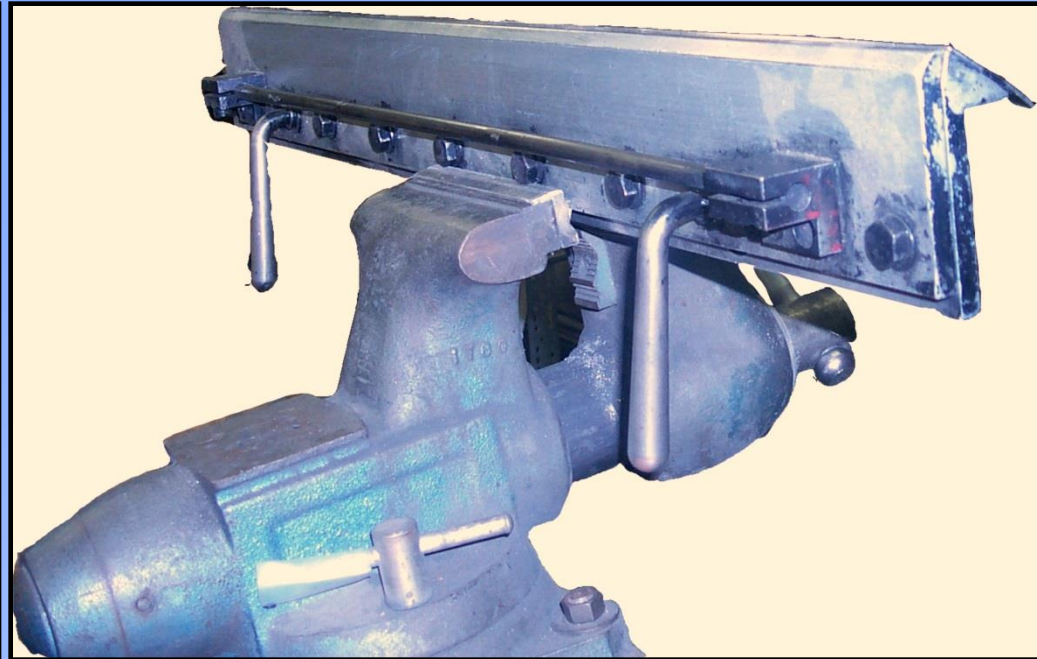
NOT RECOMMENDED



***Use approved,
cut resistant
gloves***



Provide **ADEQUATE WORK SPACES**, clamps, supports, etc. so blade holders are **not likely to fall or move** while being worked on ...





NEVER HAVE TWO PEOPLE WORK ON THE SAME HOLDER OR CHAMBER...





Extract worn blades from the end of the blade holder/chamber, then cut and drop pieces *directly* into a scrap recycling container...



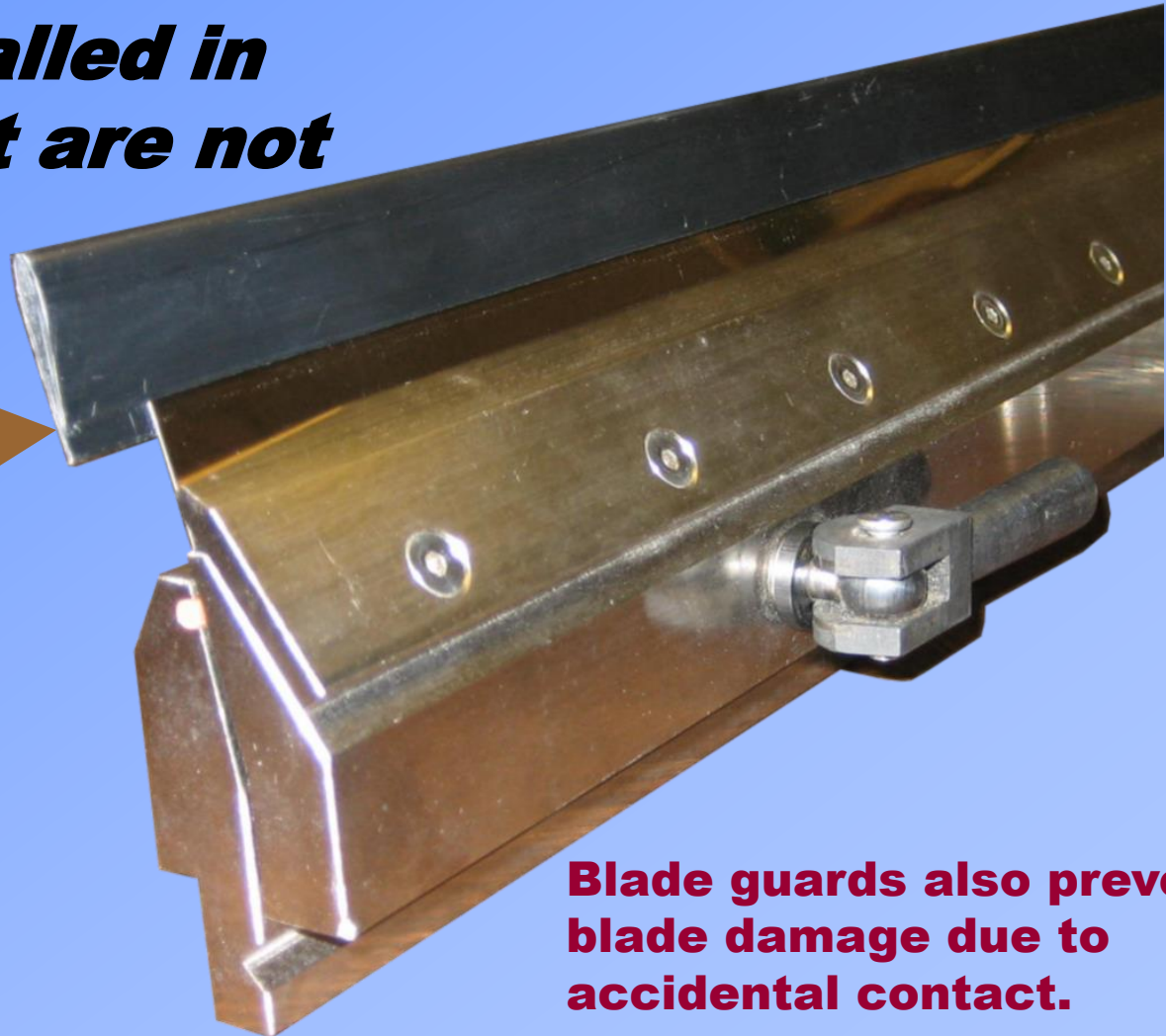
***Avoid hand-coiling scrap blades, which
may suddenly spring free...***



Use approved blade edge guards to avoid getting injured on blades installed in holders that are not being used.



Edge guards should be longer than the doctor blade



Blade guards also prevent blade damage due to accidental contact.



***And avoid transport
of blade holders “by
hand “ !!!!!***

***Use a
cart !****



****or equivalent***

CAUTION

THIS PRESENTATION HAS COVERED SOME *MAJOR* DOCTOR BLADE SAFETY PROBLEMS, BUT IS *NOT* INTENDED TO COVER *EVERY* BLADE SAFETY PROBLEM THERE IS....

FOLLOW YOUR PLANT'S SAFETY RULES, USE APPROVED SAFETY GEAR AT ALL TIMES,

AND....



***Make safe
doctor blade
handling
happen
in your
plant !***



The doctor blade safe-handling information in this presentation is intended to supplement and assist your Company's safety procedures, training, and OSHA and NIOSH rules but not replace or alter them. Specific plant rules pertaining to your facility and tasks should be obeyed at all times. IN NO EVENT WILL ALLISON SYSTEMS CORPORATION BE LIABLE FOR ANY INDIRECT, INCIDENTAL, SPECIAL OR CONSEQUENTIAL DAMAGES, INCLUDING BUT NOT LIMITED TO LOST PROFITS OR LOST SAVINGS, INCURRED BY THE USER OF THIS PRESENTATION OR ANY THIRD PARTY, WHETHER IN AN ACTION IN CONTRACT, TORT, OR OTHERWISE, EVEN IF ALLISON SYSTEMS CORPORATION HAS BEEN ADVISED IN ADVANCE OF THE POSSIBILITY OF SUCH DAMAGES.

ALLISON

Systems Corporation

220 Adams St. Phone: 856-461-9111
Riverside, NJ 08075 Fax: 856-461-9373
www.allisonblades.com