

# SAFE-HANDLING IDEAS FOR DOCTOR BLADES USED IN



## Flexo & Gravure



[www.allisonblades.com](http://www.allisonblades.com)



856-461-9111



[sales@allisonblades.com](mailto:sales@allisonblades.com)



## SAFE-HANDLING IDEAS FOR DOCTOR BLADES USED IN FLEXO & GRAVURE



.004" – .012" total thickness

The **edges** of  
typical new,  
**unused**  
metal Flexo  
and Gravure  
Doctor  
Blades look  
like this in  
**cross-section**



[www.allisonblades.com](http://www.allisonblades.com)



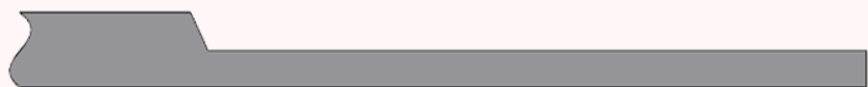
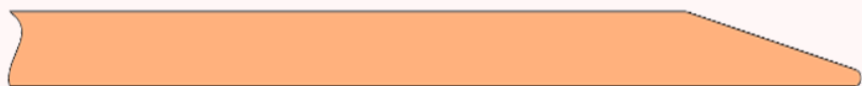
856-461-9111



[sales@allisonblades.com](mailto:sales@allisonblades.com)



**While these edges don't look  
very sharp, new blades must  
be **HANDLED WITH CARE!****



Because you can  
**STILL GET INJURED!**

And damage  
blades, which may  
then **PRINT SCRAP!**





**SAFE-HANDLING IDEAS FOR  
DOCTOR BLADES USED IN  
FLEXO & GRAVURE**

**Even new blades have **corners**,  
so don't carry around loose  
coils or loose blades.**



Because blade  
corners can  
**SPRING OUT!**

And **INJURE** you  
or a co-worker.



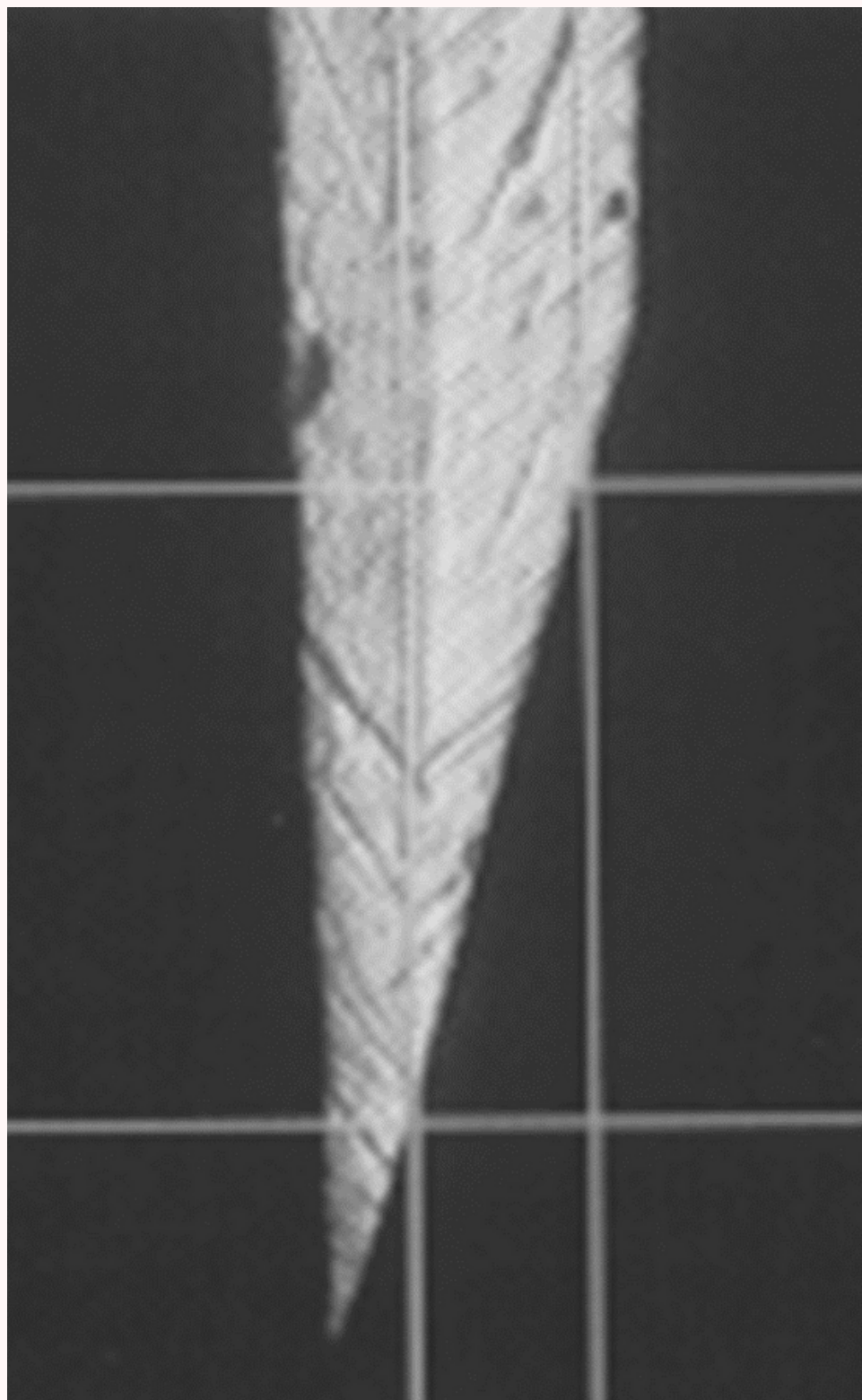
[www.allisonblades.com](http://www.allisonblades.com)



856-461-9111



[sales@allisonblades.com](mailto:sales@allisonblades.com)



As Gravure and Flexo Doctor Blades **wear** against the rolls they wipe:

**Blade edges**  
**get RAZOR**  
**SHARP,**  
**JAGGED, and**  
**DANGEROUS**  
**to handle**  
**or contact.**



[www.allisonblades.com](http://www.allisonblades.com)



856-461-9111

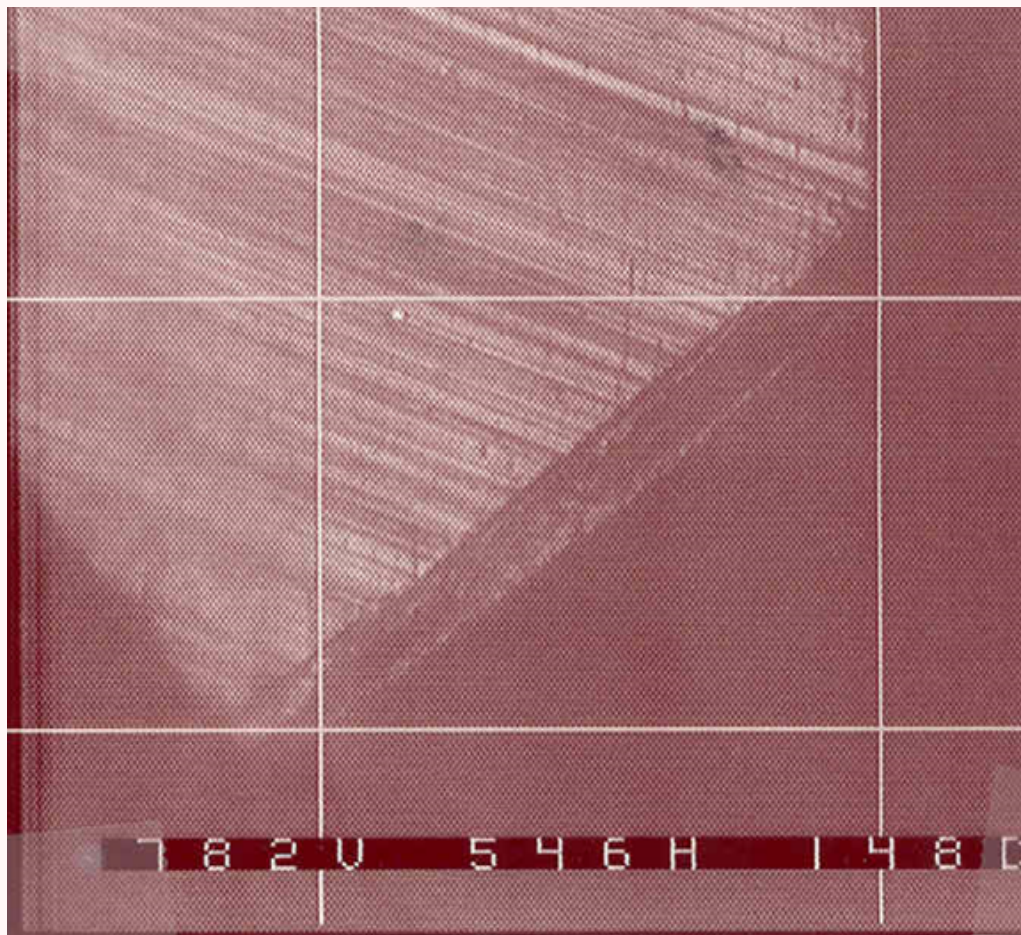


[sales@allisonblades.com](mailto:sales@allisonblades.com)



## SAFE-HANDLING IDEAS FOR DOCTOR BLADES USED IN FLEXO & GRAVURE

Are plastic Doctor Blades never sharp?



**Hard plastics  
& composites  
CAN GET  
SHARP when  
worn too.**



[www.allisonblades.com](http://www.allisonblades.com)



856-461-9111



[sales@allisonblades.com](mailto:sales@allisonblades.com)



What's more dangerous than a **falling blade** with **sharp edges**?

**A falling blade with some WEIGHT behind it.**

**So beware of LOOSE HOLDERS containing WORN or NEW DOCTOR BLADES.**



[www.allisonblades.com](http://www.allisonblades.com)



856-461-9111



[sales@allisonblades.com](mailto:sales@allisonblades.com)



**FLEXO CHAMBERS**  
can tip, move, or  
fall while you're  
working on blades.



**NEVER** put  
bare hands  
into chambers  
between two  
sharp Doctor  
Blades!



[www.allisonblades.com](http://www.allisonblades.com)



856-461-9111



[sales@allisonblades.com](mailto:sales@allisonblades.com)





How to make  
Doctor Blade  
handling  
**fundamentally  
safer?**

**HERE ARE  
SOME IDEAS!**



[www.allisonblades.com](http://www.allisonblades.com)



856-461-9111



[sales@allisonblades.com](mailto:sales@allisonblades.com)



## SAFE-HANDLING IDEAS FOR DOCTOR BLADES USED IN FLEXO & GRAVURE

It's **strongly recommended** that you keep blades in their protective packaging and install them directly from these packages where possible.



[www.allisonblades.com](http://www.allisonblades.com)



856-461-9111



[sales@allisonblades.com](mailto:sales@allisonblades.com)



## SAFE-HANDLING IDEAS FOR DOCTOR BLADES USED IN FLEXO & GRAVURE

Doing work on common Doctor Blade assemblies with bare hands is **NOT RECOMMENDED.**

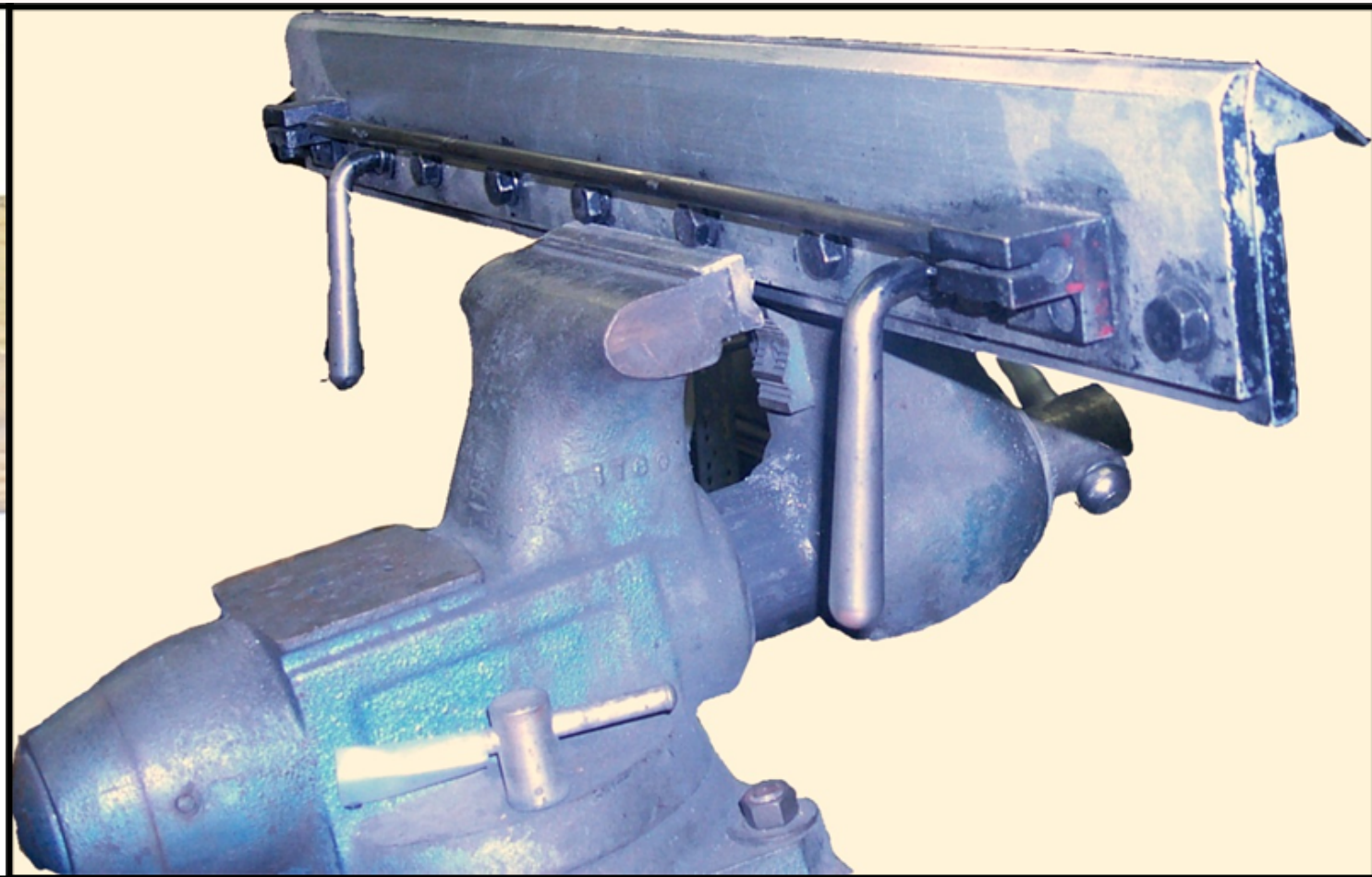
Use approved cut-resistant gloves.





## SAFE-HANDLING IDEAS FOR DOCTOR BLADES USED IN FLEXO & GRAVURE

Provide **ADEQUATE WORK SPACES**, clamps, supports, etc., so blade holders are **not likely to fall or move** while being worked on.



[www.allisonblades.com](http://www.allisonblades.com)



856-461-9111



[sales@allisonblades.com](mailto:sales@allisonblades.com)



## SAFE-HANDLING IDEAS FOR DOCTOR BLADES USED IN FLEXO & GRAVURE

**NEVER** have two people work on the same holder or chamber.



[www.allisonblades.com](http://www.allisonblades.com)



856-461-9111



[sales@allisonblades.com](mailto:sales@allisonblades.com)



## SAFE-HANDLING IDEAS FOR DOCTOR BLADES USED IN FLEXO & GRAVURE



Extract worn blades from the end of the blade holder/chamber, then cut and drop pieces **DIRECTLY** into a scrap recycling container.



## SAFE-HANDLING IDEAS FOR DOCTOR BLADES USED IN FLEXO & GRAVURE

**Avoid** hand-coiling scrap blades, which may suddenly spring-free.



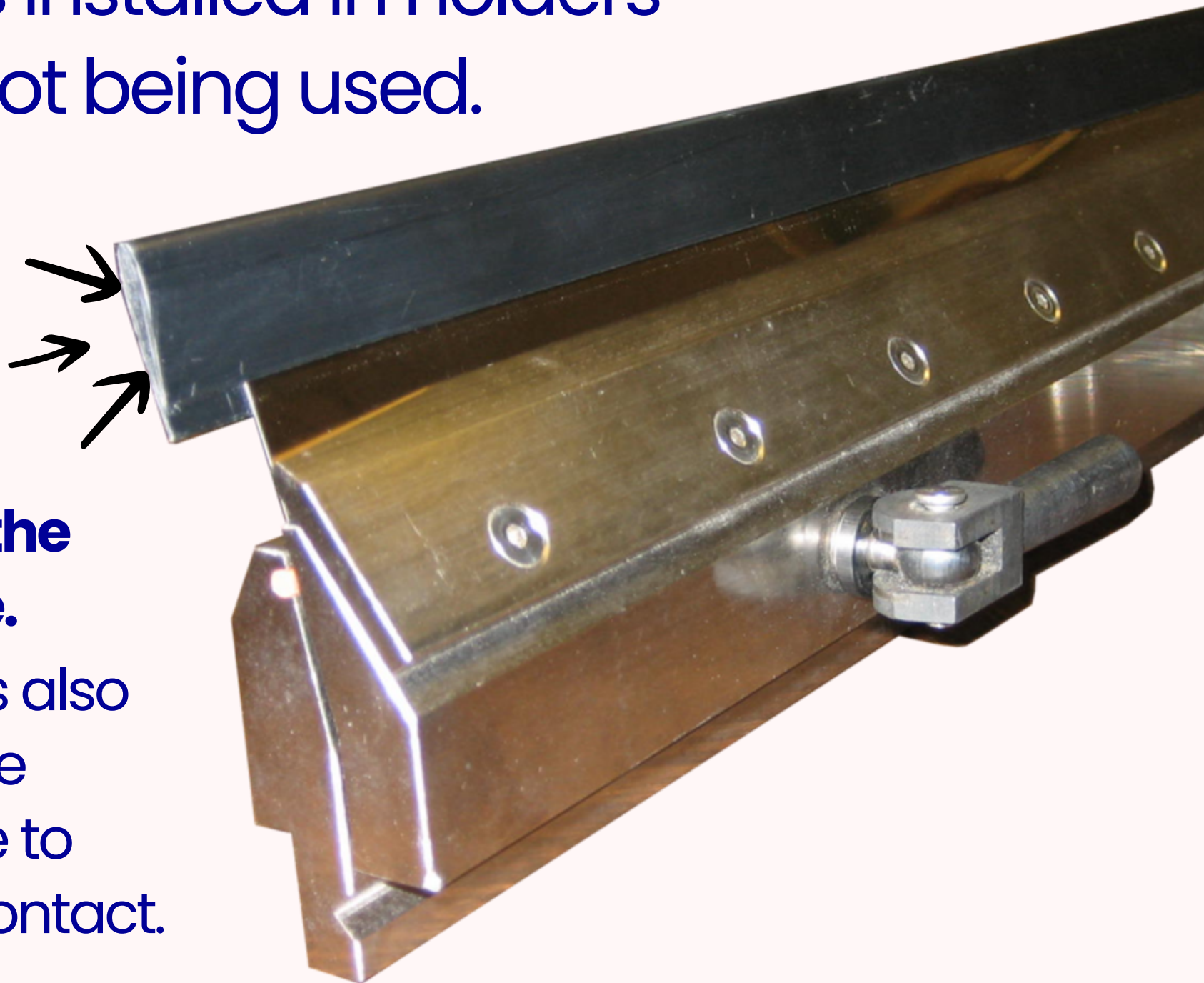


## SAFE-HANDLING IDEAS FOR DOCTOR BLADES USED IN FLEXO & GRAVURE

Use approved blade edge guards to avoid getting injured on blades installed in holders that are not being used.

**Edge guards should be longer than the Doctor Blade.**

Blade guards also prevent blade damage due to accidental contact.







## SAFE-HANDLING IDEAS FOR DOCTOR BLADES USED IN FLEXO & GRAVURE

**Avoid** transport of blade holders by hand. Use a cart or equivalent.





## SAFE-HANDLING IDEAS FOR DOCTOR BLADES USED IN FLEXO & GRAVURE

**ALWAYS** follow your plant's safety rules. Specific plant rules on your facility and tasks **SHOULD BE OBEYED AT ALL TIMES.**



[www.allisonblades.com](http://www.allisonblades.com)



856-461-9111



[sales@allisonblades.com](mailto:sales@allisonblades.com)